

**STR. COSTIUJENI, CODRU, MUN.
CHIȘINĂU**

Surface, m2
165

Rooms
3

Floors
4

Land, are
1

Garage
Yes

Bathrooms
2

Bulding type
New building

House condition
White variant

Plumbing
With plumbing

Sewerage
With sewerage

Gasification
With gasification

Sale
185 000 €

Ilinca Muhaciov

079 641 777



Townhouse for sale in the white version, located on str. Costiujeni, or. Code.

Land surface: 1 are

Total area: 163 m2

Partitioning: 4 bedrooms, kitchen combined with living room, 3 sanitary blocks, garage.

Features:

- the white version;
- autonomous heating;
- limestone construction;
- thermal insulation with mineral wool 10 cm;
- panoramic windows, thermopanes German profile KBE;
- 3 bottles, LOW-E, 4S;
- ceiling height 2.75m;
- German class A boilers;
- floor heating;
- high quality armored doors;
- video surveillance.

Developed infrastructure.

Nearby, kindergarten. school, cafes, hospitals, bank, etc.


Easy access to public transport.

Ilinca Muhaciov

079 641 777



Localizare pe hartă

 STR. COSTIUJENI, CODRU, MUN. CHIȘINĂU

Ilinca Muhaciov

079 641 777





mirax

mirax

📍 STR. TIGHINA, 24

☎ +37378001717

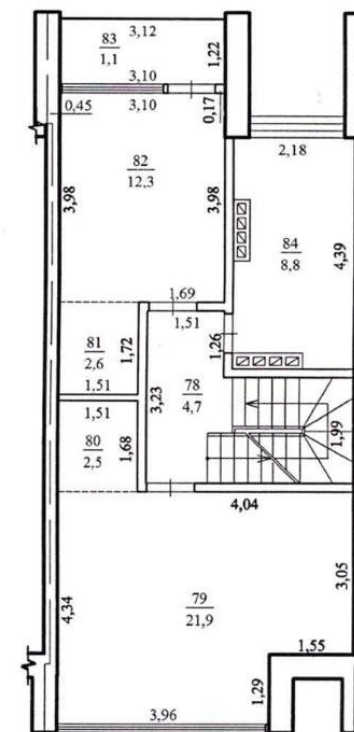
✉ OFFICE@MIRAX.MD







Nivelul:2 Etaj



Architectural floor plan of a building with a central staircase. The plan shows various rooms with dimensions and a central staircase area. Dimensions are given in meters. The layout includes a large room on the left, a central staircase, and several smaller rooms on the right and bottom. The staircase is located in the center-right area, with a landing and stairs leading up and down. The rooms are labeled with numbers and dimensions.

Dimensions and room numbers:

- Top left room: 3,11 (width), 0,17 (height), 4,64 (length), $\frac{64}{15,2}$ (area)
- Top right room: 2,19 (width), 5,26 (length), 4,39 (length), $\frac{65}{9,0}$ (area)
- Bottom left room: 1,86 (width), 1,71 (height), 2,63 (length), $\frac{63}{4,5}$ (area)
- Bottom right room: 1,25 (width), 1,59 (height), 2,94 (length), 3,93 (area)
- Central staircase area: 1,45 (width), 1,31 (height), 2,04 (length), $\frac{61}{3,0}$ (area)
- Other dimensions: 5,53 (width), 0,25 (height), 4,16 (length), 2,94 (length)

