

**BD. DACIA, BOTANICA, CHIȘINĂU**

Surface, m2	Rooms	
<b>150</b>	<b>4</b>	
Floors	Land, are	
<b>2</b>	<b>6</b>	
Garage	Bathrooms	
<b>No</b>	<b>3</b>	
Bulding type	House condition	
<b>New building</b>	<b>White variant</b>	
Plumbing	Sewerage	Gasification
<b>With plumbing</b>	<b>With sewerage</b>	<b>With gasification</b>

Sale  
**420 000 €**

Sergiu Muntean      079 476 777





Superb duplex for sale in German village

House area: 150 sqm

Land area: 6 ares

Layout:

- Level 1: entrance hall, kitchen, dining room, living room with access to the terrace, bathroom
- Level 2: 3 bedrooms (including a master bedroom with en-suite bathroom and walk-in closet), additional bathroom, laundry area, terrace

Features:

- Spacious yard (largest land area in the area)
- Paved access road
- Heated floors
- Commissioned and ready for living
- Large terrace
- Panoramic windows
- Full local infrastructure
- Very quiet area
- Easy access to public transportation

Sergiu Muntean

079 476 777













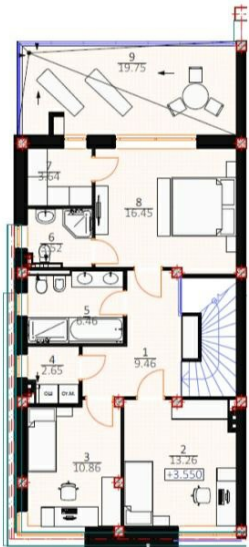












SUPRAFAȚĂ TOTALĂ ETAJ **86,05 M<sup>2</sup>**

**DUPLEX F-**  
PLANIMETRIE AP 1

SUPRAFAȚĂ  
TOTALĂ COMERCIALĂ  
**148,44 M<sup>2</sup>**

SUPRAFAȚA TOTALĂ LOCATIVĂ **133,35 M<sup>2</sup>** + SUPRAFAȚA TOTALĂ TERASĂ **50,29 M<sup>2</sup>**

**PLAN ETAJ COTA 3,500**

ADRESA BUNULUI IMOBIL:  
**CHIȘINĂU, BD. DACIA**



 STR. ARMENEASCĂ, 23

 +37378001717

 OFFICE@MIRAX.MD











