

ŞOS. HÂNCEŞTI, TELECENTRU, CHIŞINĂU

Surface, m2	Rooms
69	2
Floor	Building type
5/9	New building
Real estate condition	Balconies
White variant	1
Heating	Bathrooms
Autonomous	2

Sale
88 556 €

Daniel Chiru 076 001 006



For sale: 2-bedroom apartment with bilateral layout, located on Hâncești Highway, Telecentru district, in the "Solaris" Residential Complex, developed by Lagmar Construction Company.

Total area: 68.38 sqm

Installment payment:

- Initial payment: 51,000 euro;
- Remaining amount: 4,220 euro, paid quarterly in 8 installments;
- Upon commissioning: 3,667 euro;
- Full payment by December 2027.

Layout:

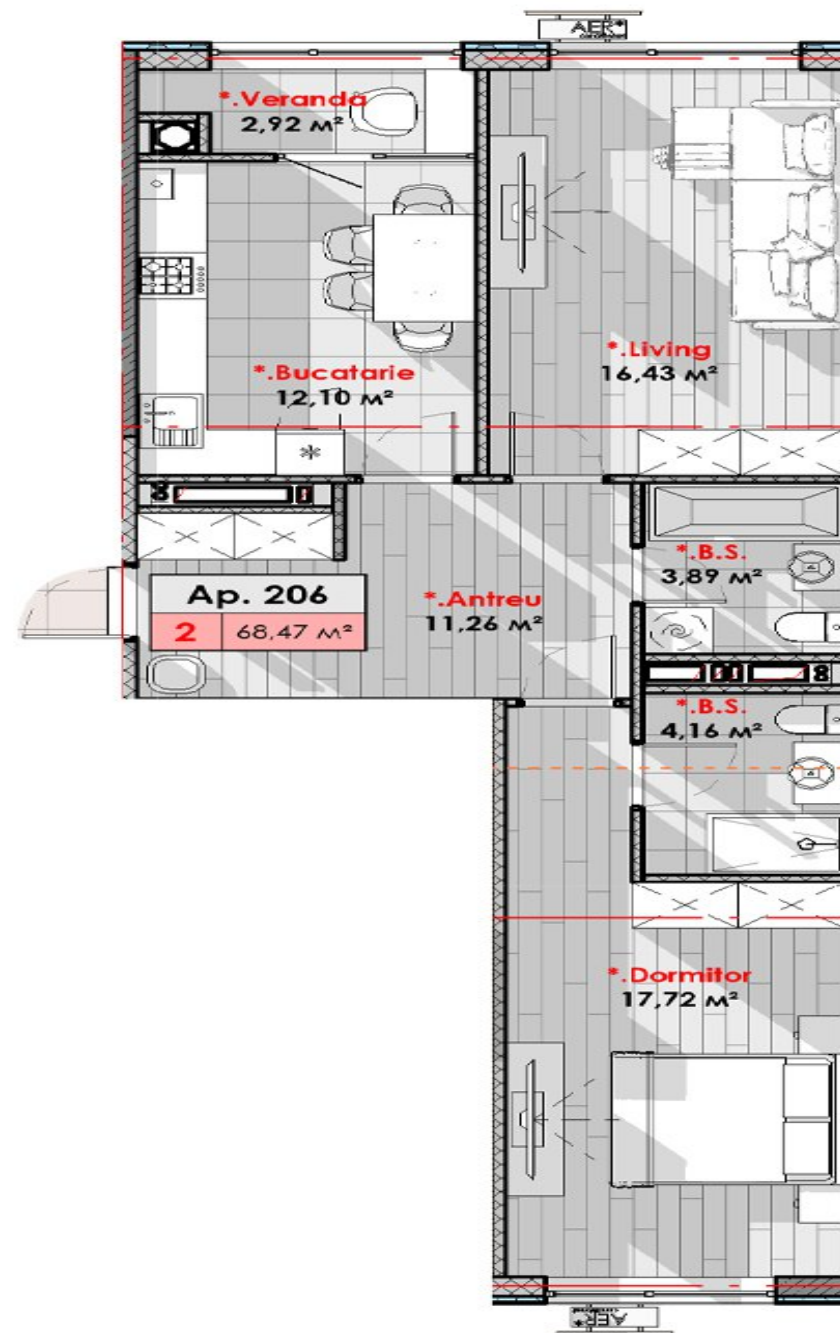
2 bedrooms, 2 bathrooms, kitchen, balcony, wardrobe.

Features and amenities:

- White finish;
- Autonomous heating;
- Project comprises 23 residential blocks;
- Underground parking;
- Panoramic windows;
- Pedestrian

Daniel Chiru

076 001 006



Localizare pe hartă

 ȘOS. HÂNCEȘTI, TELECENTRU, CHIȘINĂU

Daniel Chiru

076 001 006





mirax

mirax

📍 STR. TIGHINA, 24

☎ +37378001717

✉ OFFICE@MIRAX.MD



