

**STR. N. MILESCU SPĂTARU,  
CIOCANĂ, CHIȘINĂU**

Surface, m2	Rooms
<b>72</b>	<b>2</b>
Building type	Real estate condition
<b>New building</b>	<b>White variant</b>
Floor	Balconies
<b>8/8</b>	<b>1</b>
Heating	Bathrooms
<b>Autonomous</b>	<b>2</b>

**Sale**  
**71 300 €**



**Radu Prigala**

**078 043 777**





Penhouse with 1 room and living room for sale, Nicoale Milescu Spătaru str.

Total area: 71.9 sqm

Compartmentation: 1 bedroom, kitchen, bedroom, 2 sanitary blocks, balcony, living room, terrace.

Characteristics:

- The monolithic concrete structure, floor/pillar type (without visible beams and columns);
- Masonry from ceramic blocks (Brikston, Porotherm or similar) 250 mm;
- External walls 250 mm and thermal insulation;
- Interior walls between apartments 200 mm;
- Internal walls between rooms 115 mm;
- Panoramic windows;
- PVC profile with 5 chambers, series 72 and above (depending on the type of manufacture);
- Thermopane with 3 bottles, with special effect (energy efficiency);
- Ceiling height in apartments 2800 mm;
- 24 kw gas boiler, bithermic heat exchanger;
- Premim class metal door, 3 sealing contours, thermally insulated with cotton wool; mineral, thermally insulated case, clad with MDF panels o







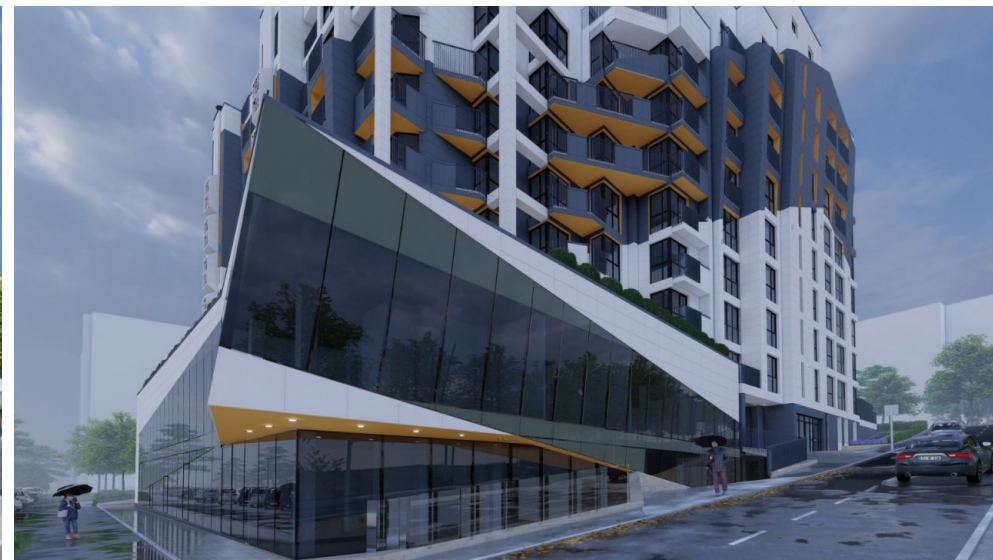












**mirax**

📍 STR. 31 AUGUST 1989, 85

☎ 078 27 77 17

✉ OFFICE@MIRAX.MD





**mirax**

📍 STR. 31 AUGUST 1989, 85

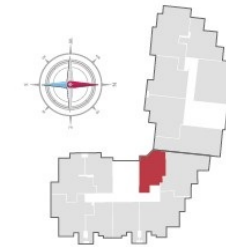
☎ 078 27 77 17

✉ OFFICE@MIRAX.MD



1 Legenda

Apartament - 1 odaie		Suprafața - m²
1	Living	8,49 m²
2	Bucătărie	12,40 m²
3	Dormitor	15,71 m²
4	Baie	5,82 m²
5	Balcon	1,31 m²
6.2	Living	14,13 m²
7.2	Baie	4,78 m²
8.2	Terasa	30,87m²
Total		71,90 m²




# PENTHOUSE







 STR. 31 AUGUST 1989, 85

 078 27 77 17

 OFFICE@MIRAX.MD