

POIANA SILVICĂ, DUMBRAVA, CHIȘINĂU

Surface, m2
220

Rooms
4

Floors
2

Land, are
3

Garage
No

Bathrooms
3

Bulding type
New building

House condition
Renovation

Plumbing
With plumbing

Sewerage
With sewerage

Gasification
With gasification

Sale
338 000 €

Sergiu Muntean

079 476 777



Duplex for sale located in a quiet location, Poiana Silvică, Dumbrava.

Total area: 220 sq m

Land surface: 3 ares

Partitioning :

1 Level: entrance hall, spacious living room with panoramic windows, kitchen with access to the terrace at the back of the house, dining room, bathroom.

2 Level: master bedroom with private bathroom, 2 bedrooms, sanitary block, balcony.

Attic: open space.

Characteristics:

- furnished;
- equipped with household appliances;
- autonomous heating;
- euro repair;
- parking for 2 cars;
- terrace behind the house;
- the courtyard landscaped with lawn;
- autonomous irrigation.

Well-developed infrastructure near the forest.

Easy access to transport.

Sergiu Muntean

079 476 777



Localizare pe hartă

POIANA SILVICĂ, DUMBRAVA, CHIȘINĂU



Sergiu Muntean

079 476 777





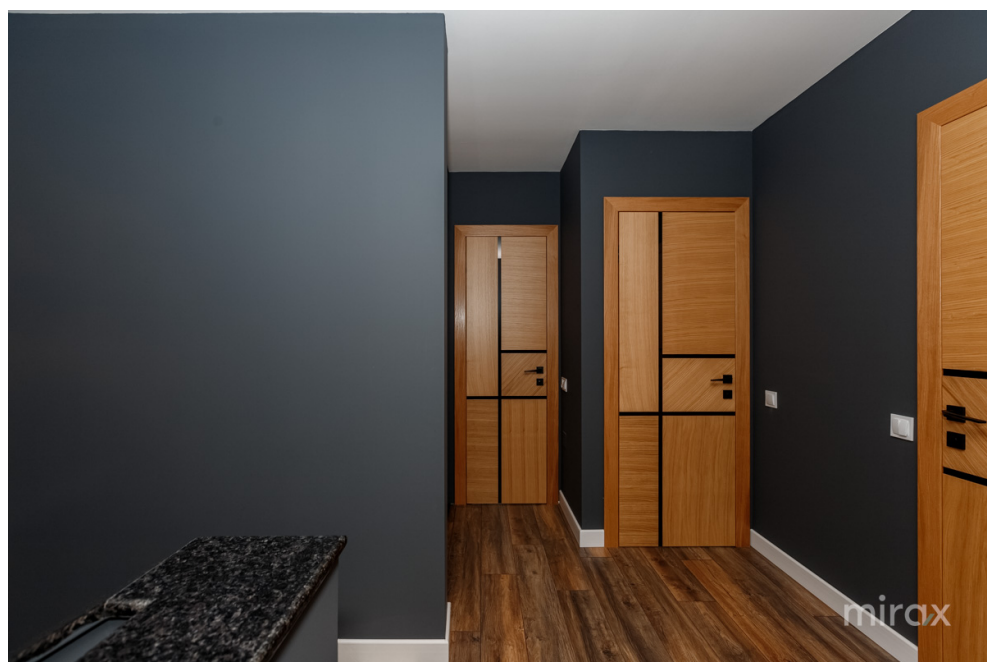
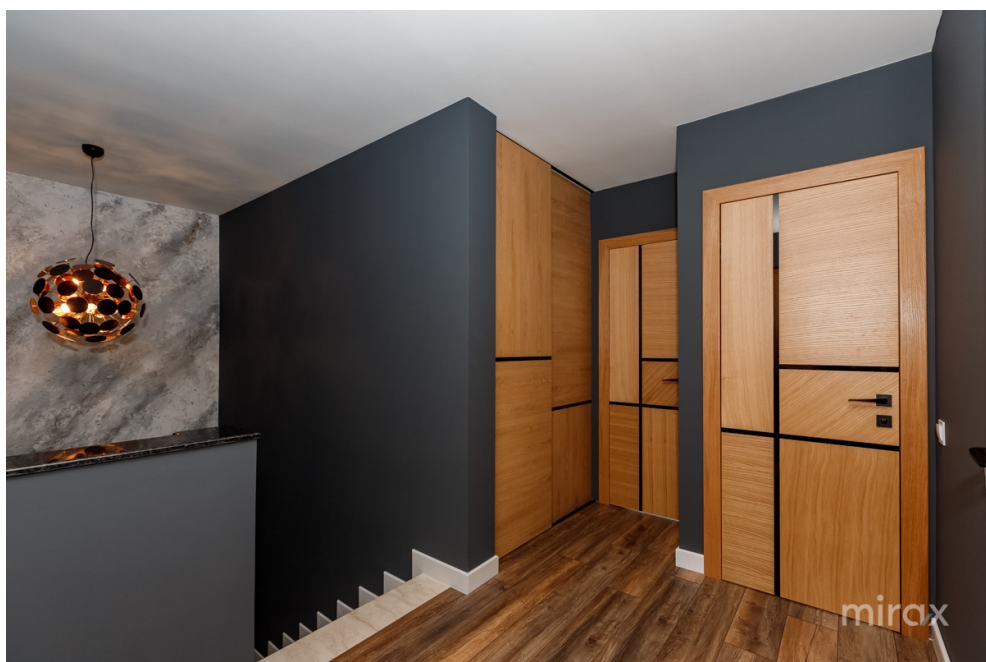




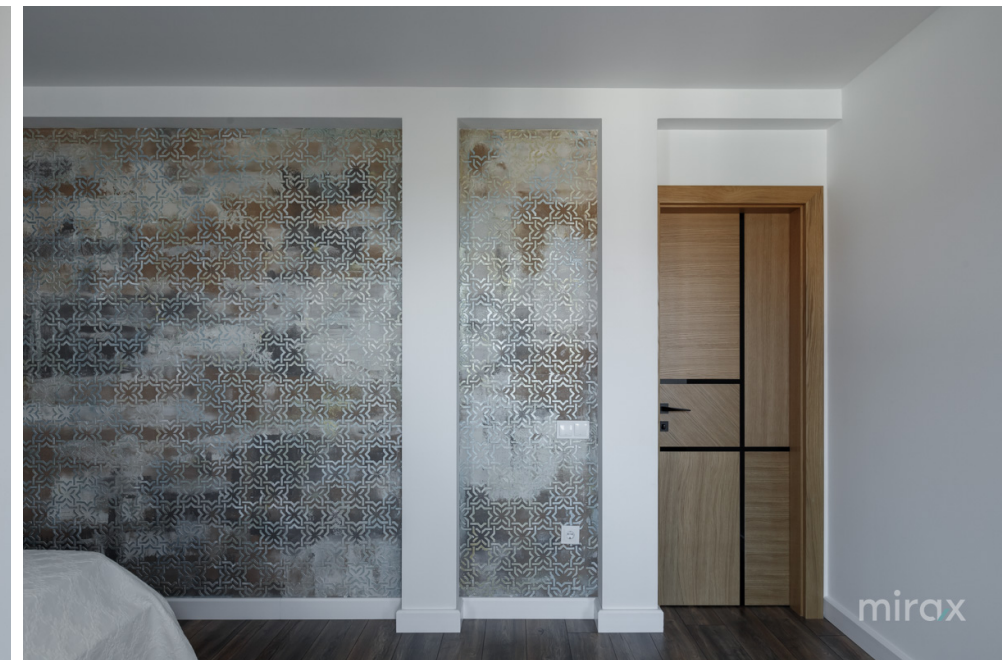


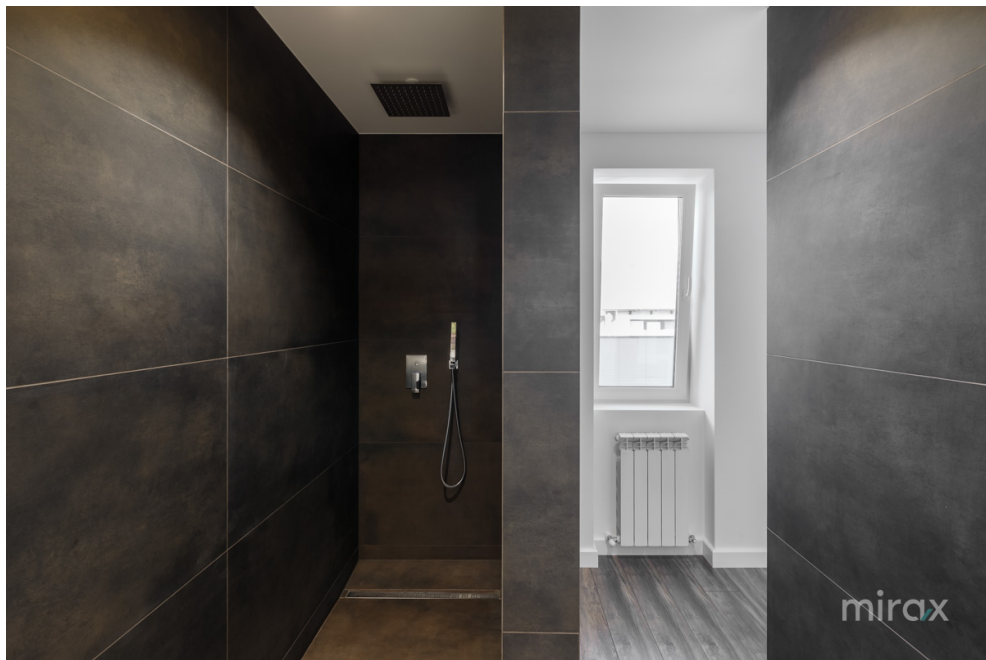















mirax

 STR. 31 AUGUST 1989, 85

 078 27 77 17

 OFFICE@MIRAX.MD